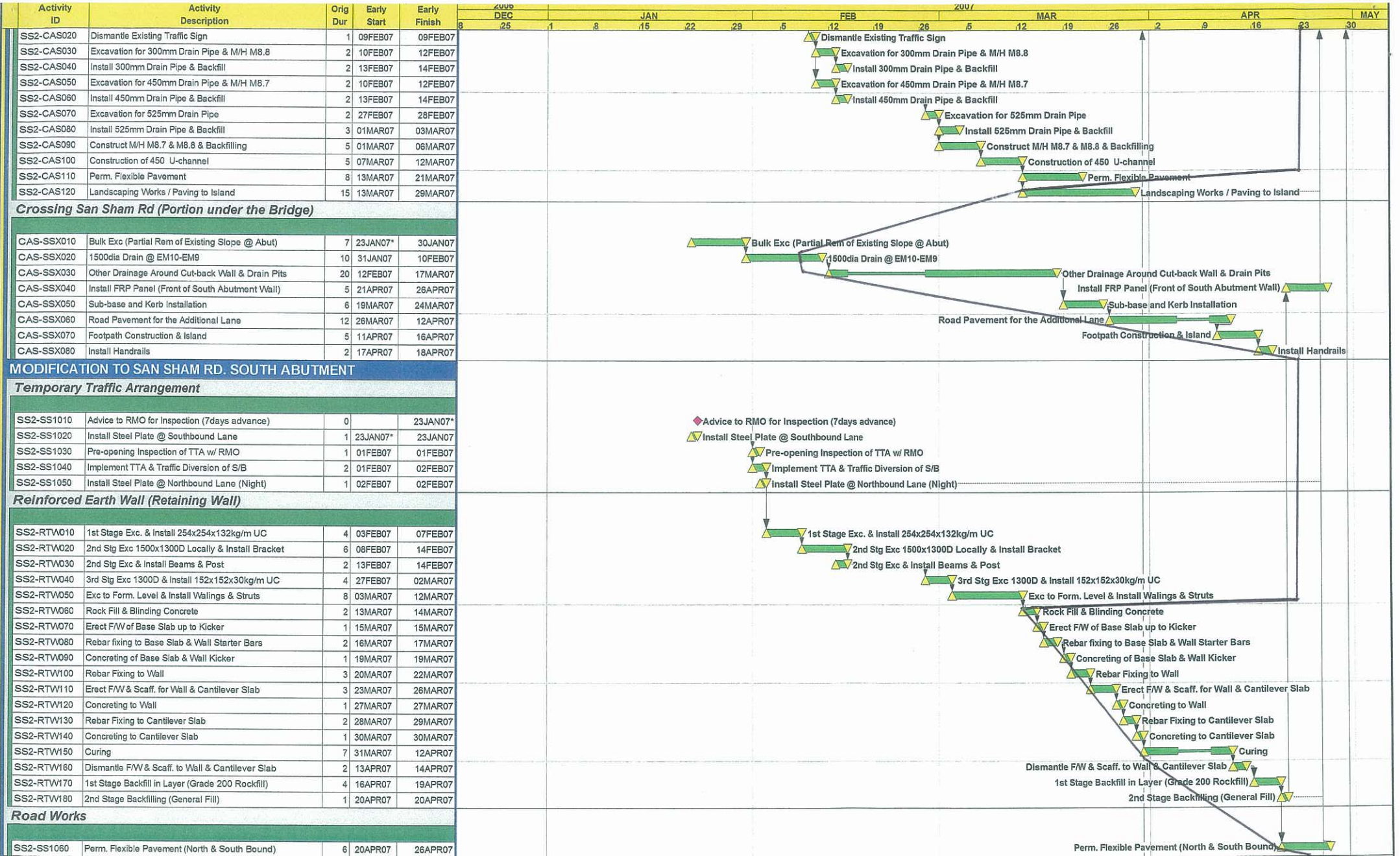


Start Date	19DEC05		Early Bar
Finish Date	30APR07		Progress Bar
Data Date	19DEC05		Critical Activity

WP06	Sheet 1 of 8
------	--------------

CHUN WO CONSTRUCTION & ENGINEERING CO. LTD.
CONTRACT NO. HY/2004/09
IMPROVEMENTS TO SAN TIN INTERCHANGE
Works Programme (WP06)

Date	Revision	Checked	Approved
26JUN05	Working Programme Rev. WP04		J. Yip
03OCT05	Working Programme Rev. WP05		J. Yip
23JAN07	Working Programme Rev. WP06	EPG	J. Yip



Start Date
Finish Date
Data Date

19DEC06
30APR07
19DEC06

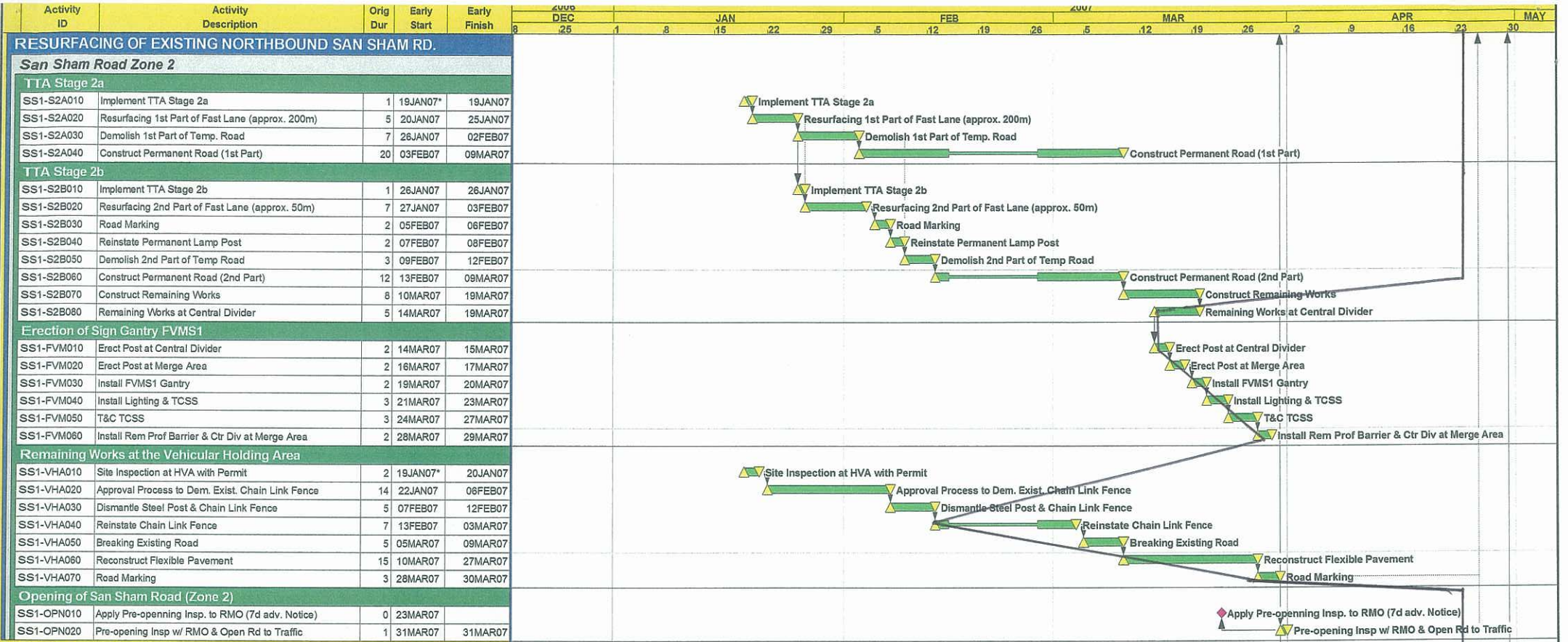


WPO6

CHUN WO CONSTRUCTION & ENGINEERING CO. LTD.
CONTRACT NO. HY/2004/09
IMPROVEMENTS TO SAN TIN INTERCHANGE
Works Programme (WP06)

Sheet 2 of 8

Date	Working Programme Rev.	Revision	Checked	Approved
25JUN05	Working Programme Rev. WP04			J. Yip
03OCT05	Working Programme Rev. WP05			J. Yip
23JAN07	Working Programme Rev. WP06		EPG	J. Yip



SECTION IV OF THE WORKS

ELEVATED SLIP ROAD 'A' (WA - Pier A4)

Pre-Hand-over and Hand-over Inspection

Activity ID	Activity Description	Orig Dur	Early Start	Early Finish
ESA-INSP01	1st Pre-Hand Over Inspection	0		28FEB07*
ESA-INSP11	2nd Pre-hand Over Inspection	0		31MAR07*
ESA-INSP21	Final Hand Over Inspection	0		30APR07

Key Dates

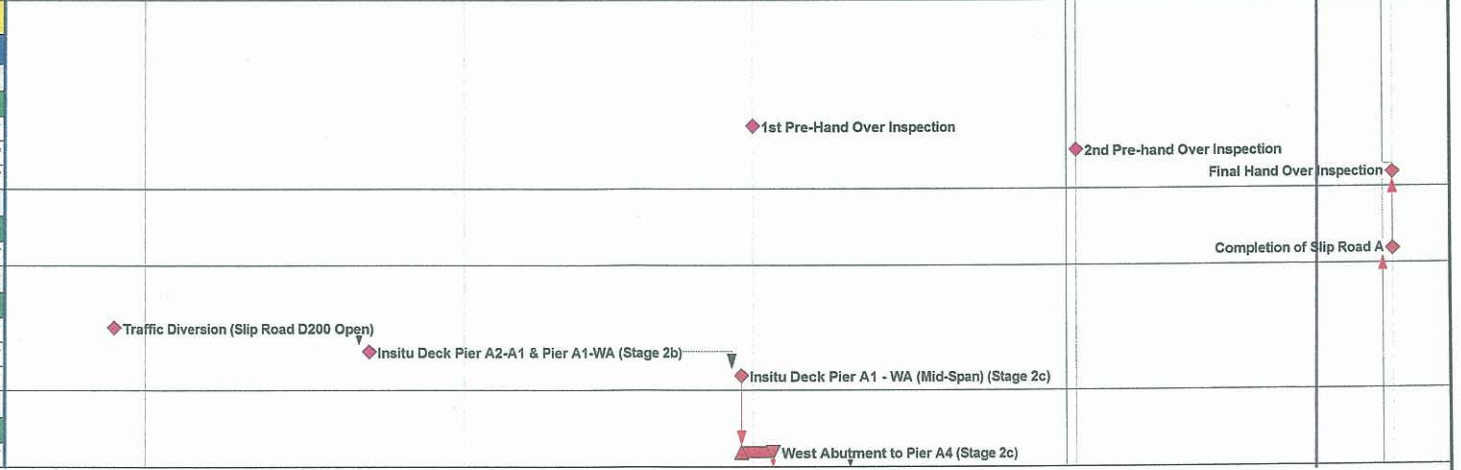
Activity ID	Activity Description	Orig Dur	Early Start	Early Finish
ESA-KEY010	Completion of Slip Road A	0		30APR07

Milestone Dates

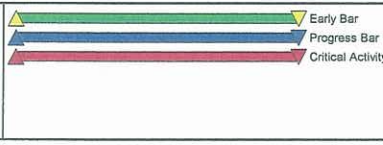
Activity ID	Activity Description	Orig Dur	Early Start	Early Finish
ESA-MILS01	Traffic Diversion (Slip Road D200 Open)	0		28DEC06*
ESA-MILS02	Insitu Deck Pier A2-A1 & Pier A1-WA (Stage 2b)	0		22JAN07*
ESA-MILS03	Insitu Deck Pier A1 - WA (Mid-Span) (Stage 2c)	0		27FEB07*

Prestress Bottom Continuity

Activity ID	Activity Description	Orig Dur	Early Start	Early Finish
ESA-PRES01	West Abutment to Pier A4 (Stage 2c)	3	28FEB07	02MAR07



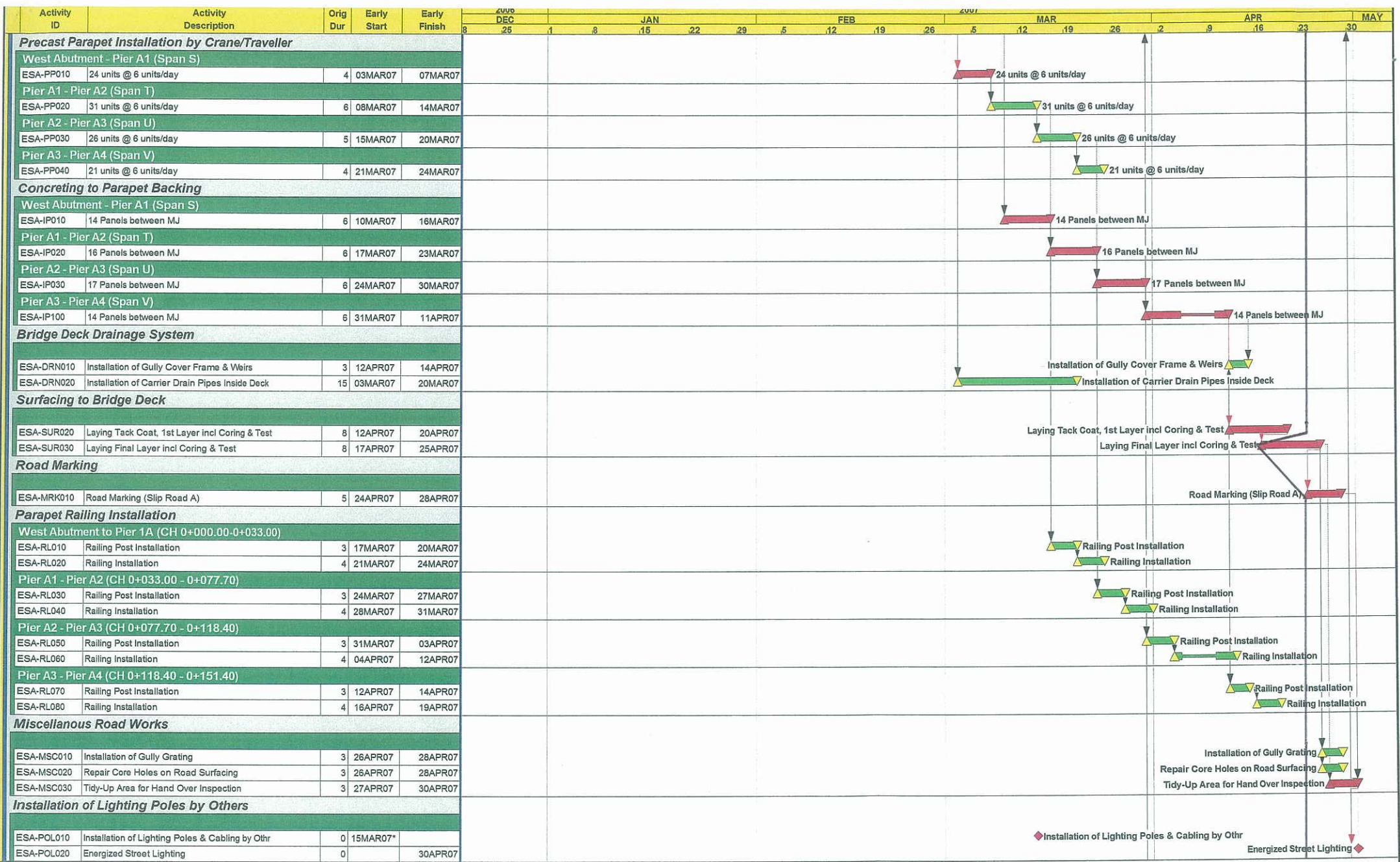
Start Date	19DEC06	Early Bar
Finish Date	30APR07	Progress Bar
Data Date	19DEC06	Critical Activity



Sheet 3 of 8

CHUN WO CONSTRUCTION & ENGINEERING CO. LTD.
 CONTRACT NO. HY/2004/09
 IMPROVEMENTS TO SAN TIN INTERCHANGE
 Works Programme (WP06)

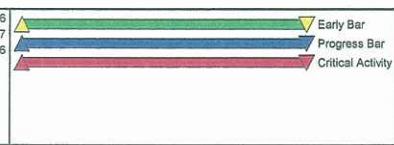
Date	Working Programme Rev.	Revision	Checked	Approved
25JUN06	Working Programme Rev. WP04			J. Yip
03OCT06	Working Programme Rev. WP05			J. Yip
23JAN07	Working Programme Rev. WP06		EPG	J. Yip



Start Date
Finish Date
Data Date

19DEC06
30APR07
19DEC06

Early Bar
Progress Bar
Critical Activity

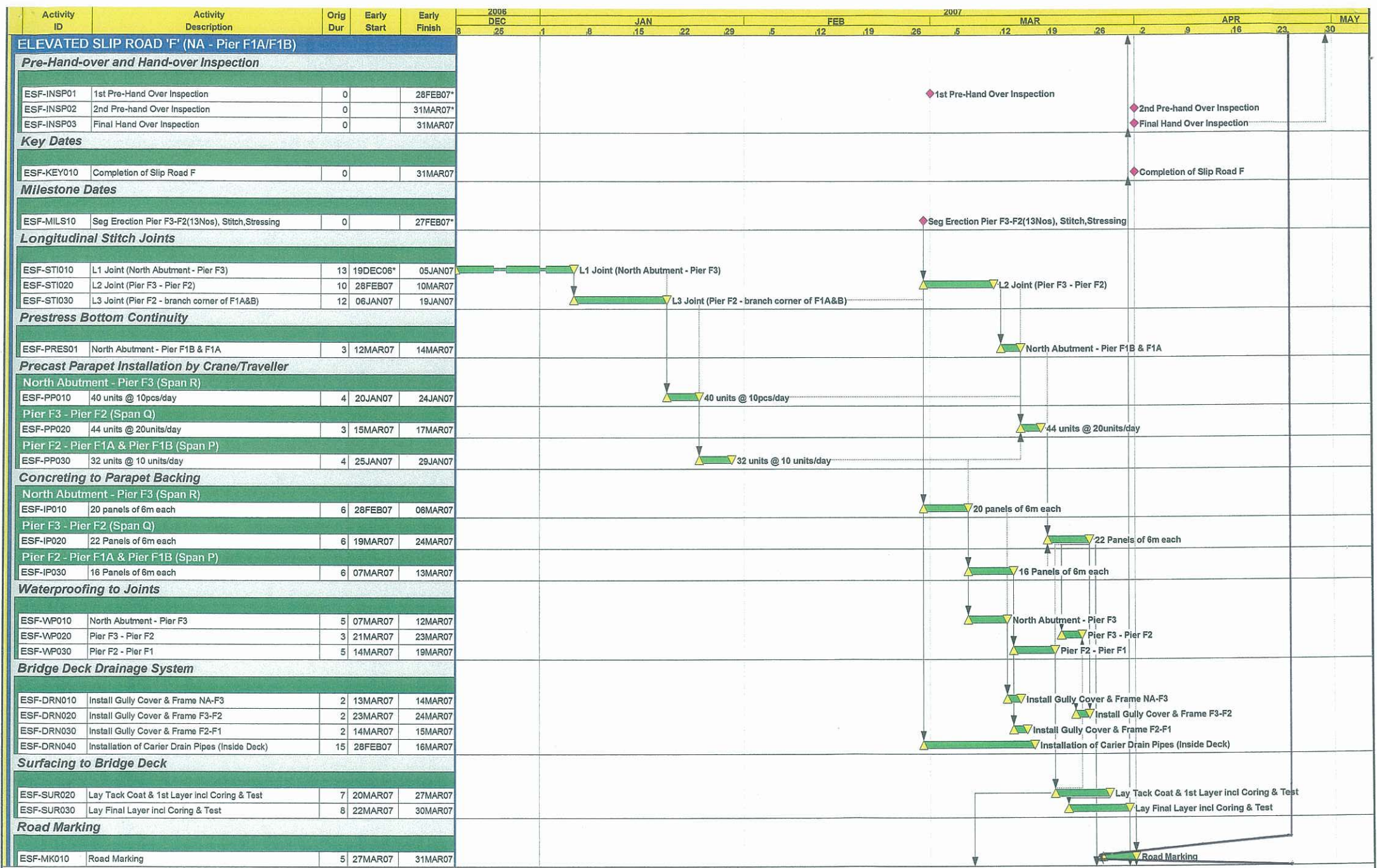


WP06

Sheet 4 of 8

CHUN WO CONSTRUCTION & ENGINEERING CO. LTD.
CONTRACT NO. HY/2004/09
IMPROVEMENTS TO SAN TIN INTERCHANGE
Works Programme (WP06)

Date	Revision	Checked	Approved
26JUN06	Working Programme Rev. WP04		J. Yip
03OCT06	Working Programme Rev. WP05		J. Yip
23JAN07	Working Programme Rev. WP06	EPG	J. Yip



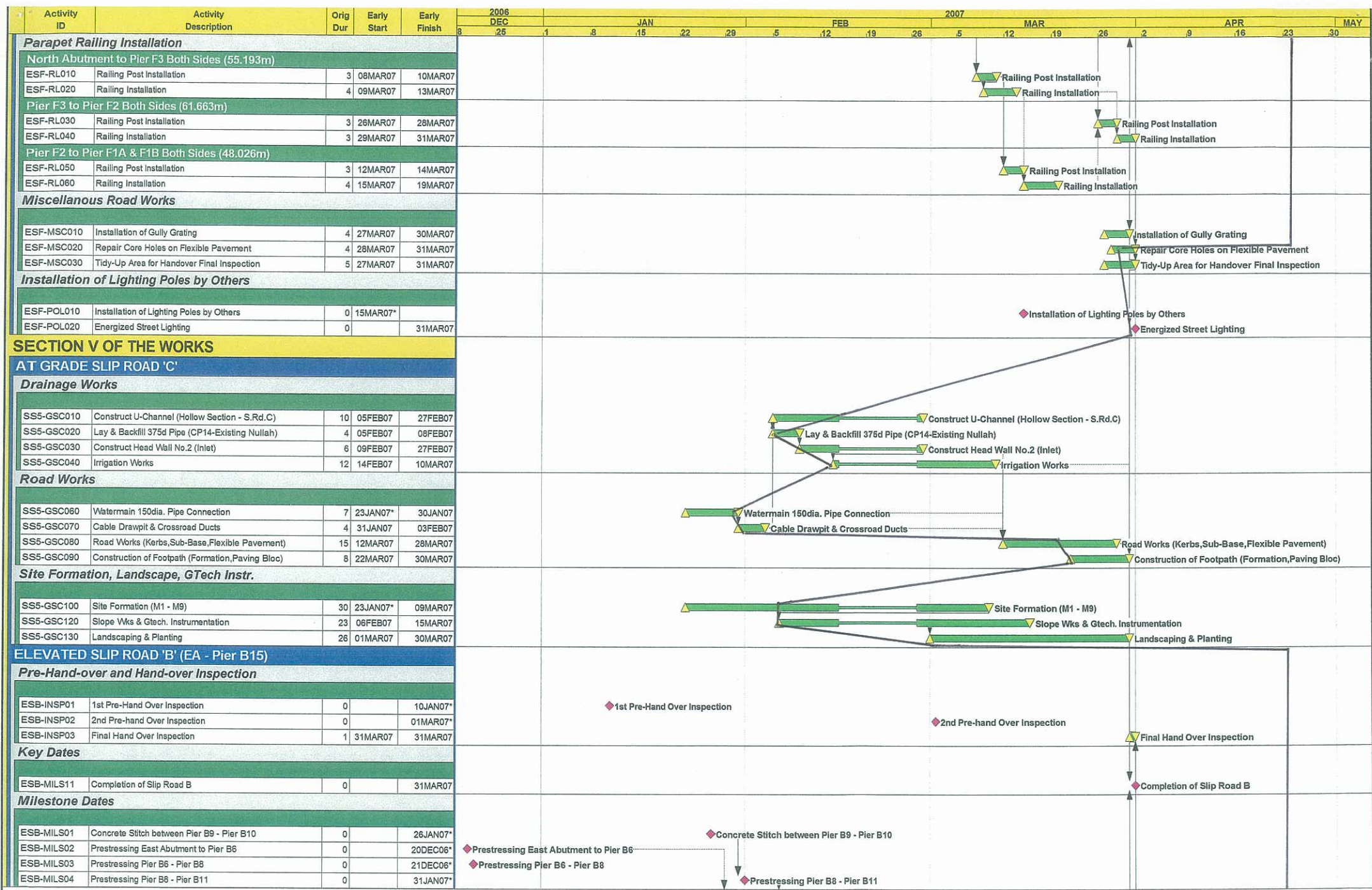
Start Date	19DEC06	Early Bar
Finish Date	30APR07	Progress Bar
Data Date	19DEC06	Critical Activity

WPO6

Sheet 5 of 8

CHUN WO CONSTRUCTION & ENGINEERING CO. LTD.
CONTRACT NO. HY/2004/09
IMPROVEMENTS TO SAN TIN INTERCHANGE
Works Programme (WP06)

Date	Working Programme Rev.	Revision	Checked	Approved
26JUN06	Working Programme Rev. WPO4			J. Yip
03OCT06	Working Programme Rev. WPO6			J. Yip
23JAN07	Working Programme Rev. WPO6		EPG	J. Yip

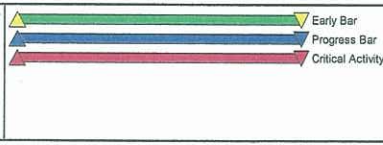


Start Date
Finish Date
Data Date

19DEC06
30APR07
19DEC06

Early Bar
Progress Bar
Critical Activity

© Primavera Systems, Inc.

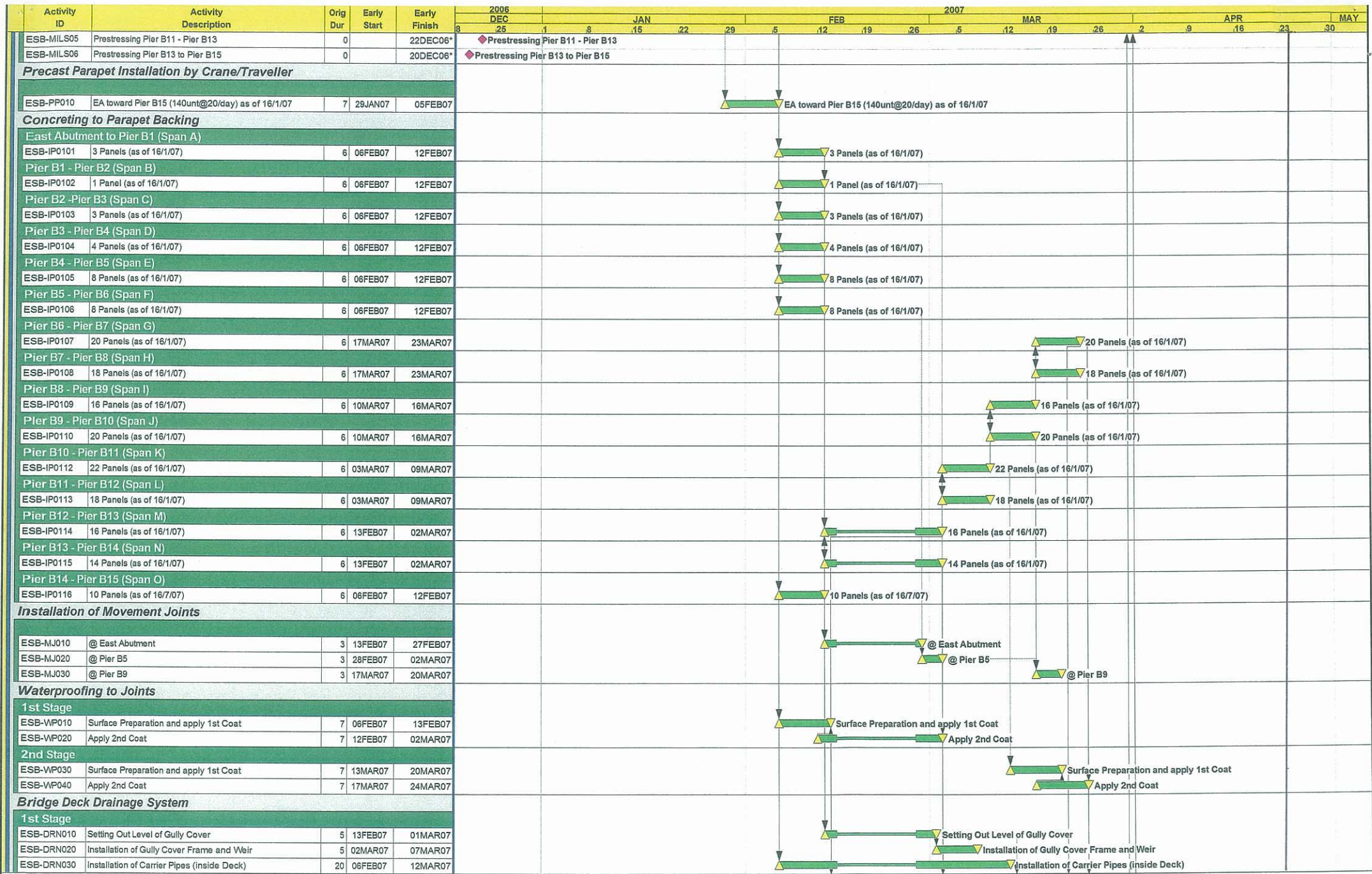


WP06

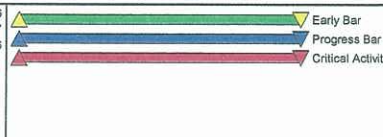
Sheet 6 of 8

CHUN WO CONSTRUCTION & ENGINEERING CO. LTD.
CONTRACT NO. HY/2004/09
IMPROVEMENTS TO SAN TIN INTERCHANGE
Works Programme (WP06)

Date	Revision	Checked	Approved
26JUN06	Working Programme Rev. WP04		J. Yip
03OCT06	Working Programme Rev. WP05		J. Yip
23JAN07	Working Programme Rev. WP06	EPG	J. Yip

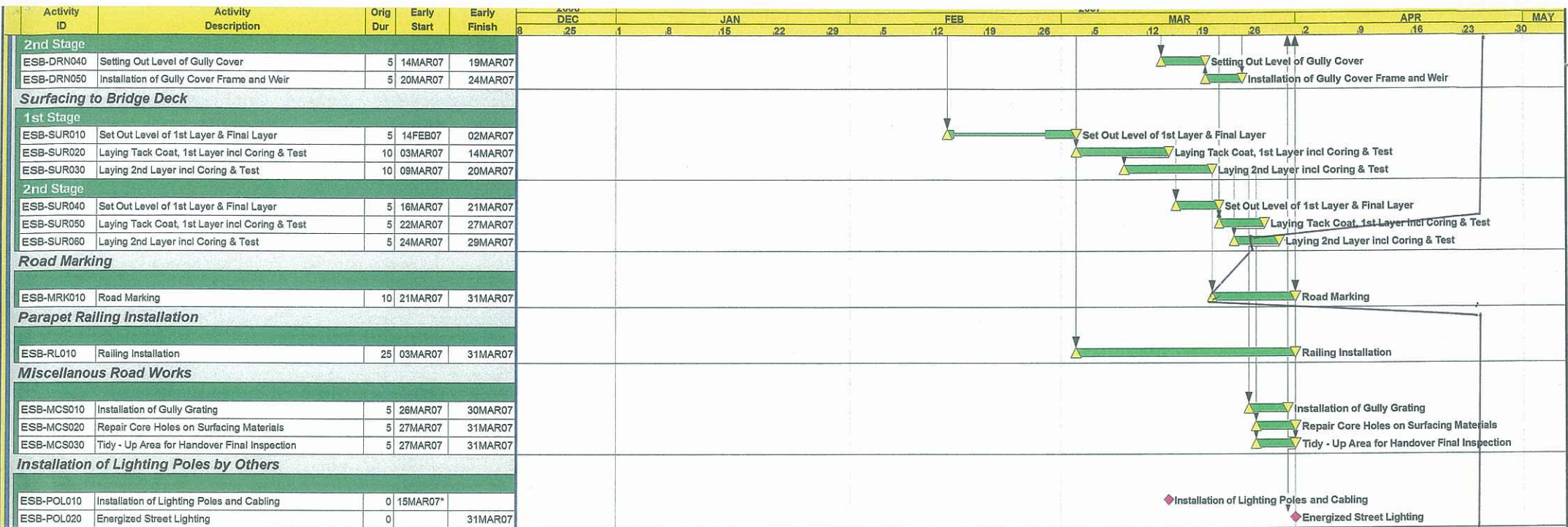


Start Date 19DEC06
 Finish Date 30APR07
 Data Date 19DEC06



WP06
 Sheet 7 of 8
CHUN WO CONSTRUCTION & ENGINEERING CO. LTD.
 CONTRACT NO. HY/2004/09
 IMPROVEMENTS TO SAN TIN INTERCHANGE
 Works Programme (WP06)

Date	Working Programme Rev.	Revision	Checked	Approved
26JUN06	Working Programme Rev. WP04			J. Yip
03OCT06	Working Programme Rev. WP05			J. Yip
23JAN07	Working Programme Rev. WP06		EPG	J. Yip



Start Date
Finish Date
Data Date



WP06

CHUN WO CONSTRUCTION & ENGINEERING CO. LTD.
CONTRACT NO. HY/2004/09
IMPROVEMENTS TO SAN TIN INTERCHANGE
Works Programme (WP06)

Sheet 8 of 8

Date	Revision	Checked	Approved
26JUN06	Working Programme Rev. WP04		J. Yip
03OCT06	Working Programme Rev. WP05		J. Yip
23JAN07	Working Programme Rev. WP06	EPG	J. Yip